

AIPHONE

GT SYSTEM

Multi Building System

SETTING MANUAL

Thank you for selecting Aiphone for your communication needs. Please read this manual carefully before installation, and keep this in a safe place for future reference.

Please note that images and illustrations depicted in this manual may differ from the actual product.

Table of Contents

READ THIS BEFORE SETTING UP THE SYSTEM

1 System configurations	3
1-1 Application examples.....	3
2 Notes about using this manual	4
3 Outline of system setup	4
3-1 System setup flow	4
4 DIP switch settings (confirm in advance)	5
4-1 Multi building control unit (GT-MCX).....	6

SYSTEM SETUP USING GT SETUP TOOL

5 Outline of settings	8
6 Initial setup	9
6-1 Installing the GT Setup Tool.....	9
6-2 Creating a new site.....	10
6-3 Changing the setting contents for an existing site ...	12
7 System settings	13
7-1 Registering resident information.....	13
7-2 Registering section information.....	14
7-3 Station settings.....	15
7-4 Changing the IP address of a section.....	19
8 Functions in the menu bar	21
8-1 Function list	21
8-2 Changing site configuration	23
8-3 Comparing and merging setting contents between stations or files	24
8-4 Uploading setting data configured by the GT Setup Tool to a multi building control unit, entrance station, guard station or expanded bus control unit.....	26
8-5 Downloading setting data on a multi building control unit, entrance station, guard station or expanded bus control unit to the GT Setup Tool.....	27
8-6 Setting the current time of GT-MCX	28

Notices

- We will under no condition be liable for any damages or losses resulting from this product's contents or specifications.
- This manual was created by Aiphone Co., Ltd., all rights reserved. Copying a part of or this entire manual without prior permission from Aiphone Co., Ltd. is strictly prohibited.
- This manual may be revised or changed without prior notice.
- Product specifications may be changed for the sake of improvement without prior notice.

Microsoft and Windows are either registered trademarks or trademarks of Microsoft Corporation in the United States and/or other countries.

Android is a trademark of Google Inc. in the United States and/or other countries.

Adobe, the Adobe logo, Acrobat, and Reader are either registered trademarks or trademarks of Adobe Systems Incorporated in the United States and/or other countries.

VIGIK is either a registered trademark or trademark of La POSTE in France.

HEXACT® is either a registered trademark or trademark of Cogelec in France.

READ THIS BEFORE SETTING UP THE SYSTEM

1 System configurations

The GT system can be configured over an IP network so multiple buildings can be connected and controlled centrally as a large-scale system. There can be a maximum of 5,000 residential/tenant stations in the system.

A multi building system consists of tenant and main sections, and a section consists of a standard or expanded system. All sections can be configured via IP network connection.

Tenant section: Tenant section consists of residential/tenant stations, entrance stations, and guard stations. One multi building control unit (GT-MCX) is needed per section.

Up to 24 tenant sections can be set up in the same system. One tenant section can support up to 500 residential/tenant stations.

Main section: Main section consists of entrance stations and guard stations.

One multi building control unit (GT-MCX) is needed per section.

Up to 8 main sections can be set up in the same system.

* A main section cannot include residential/tenant stations.

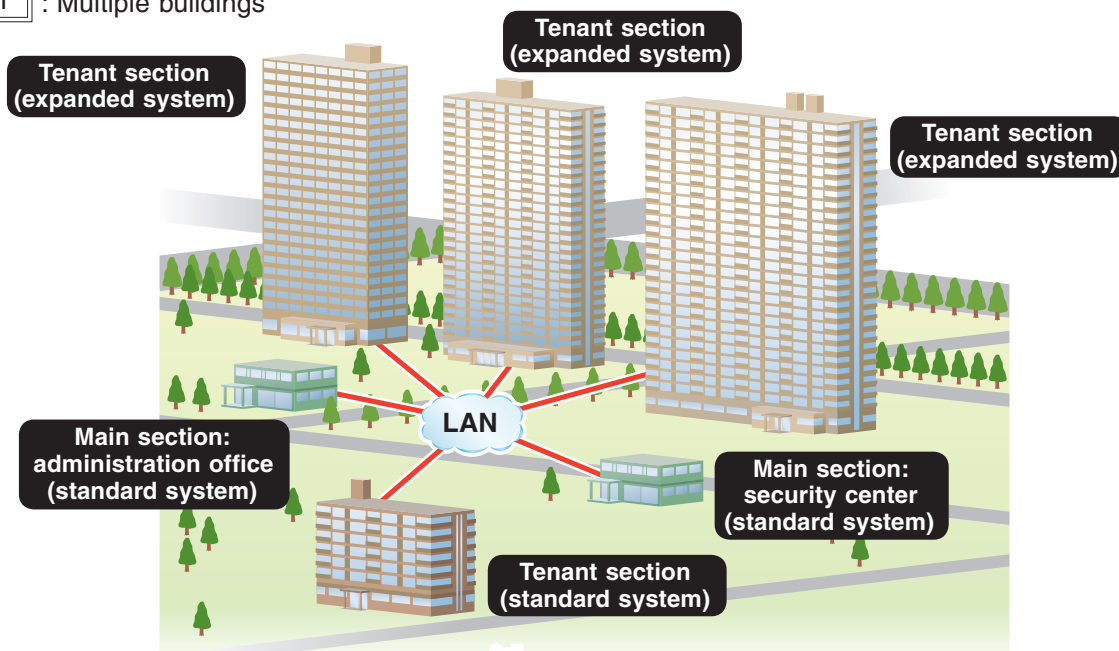
* A modular type entrance station cannot be included in a main section.

Not available in Main section



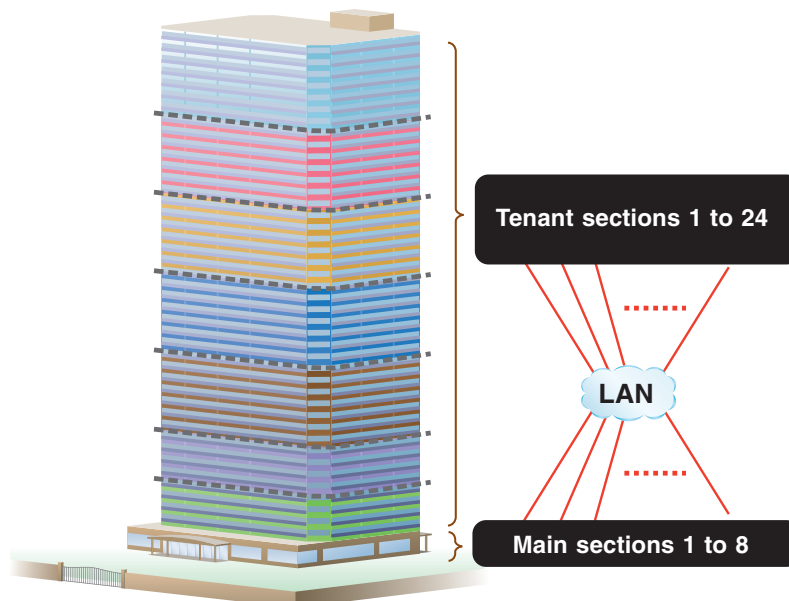
1-1 Application examples

Example 1 : Multiple buildings



Example 2 : Large-scale single building

A multi building system can be applied to a large-scale single tenant building that includes more than 500 residential/tenant stations.



2 Notes about using this manual

This manual describes how to configure the settings for the **Multi Building System**. Also read the **GT SYSTEM SETTING MANUAL/Standard & Expanded System** for the standard & expanded system configuration.

3 Outline of system setup

A multi building system consists of main sections and tenant sections with a multi building control unit (GT-MCX) installed in each section. The GT-MCX has a function to upload setting files created by the GT Setup Tool for Windows.^(*1)

For configuring the entrance station settings and guard station settings in a section, refer to the **GT SYSTEM SETTING MANUAL/Standard & Expanded System**.

In a multi building system, link settings are necessary in each tenant section. For configuring the link settings in a tenant section, refer to section **2** of the **GT SYSTEM SETTING MANUAL/Standard & Expanded System**.

NOTE:

The link settings are not necessary between a main section and tenant section.

(*1): GT Setup Tool for Windows is described as "GT Setup Tool" in this manual.

3-1 System setup flow

Setup example 1

First configure the settings for the GT-MCX in a main section by using the GT Setup Tool, then configure the settings for each section

- 1** Configure the settings for the GT-MCX in a main section by using the GT Setup Tool. (→ **6**, **7**)
- 2** Configure the settings for the GT-MCX in a tenant section by using the GT Setup Tool. (→ **6**, **7**)
- 3** Apply the settings configured in steps 1 and 2 to the following devices by using the "Compare & Merge Settings" function. (→ **8-3**)

Main section	Multi building control unit [GT-MCX] Entrance station Guard station
Tenant section	Multi building control unit [GT-MCX] Entrance station Guard station Expanded bus control unit [GT-BCXB-N]

- 4** Upload the setting file of each GT-MCX, entrance station and guard station. (→ **8-4**)

* The setting file of GT-BCXB-N can be uploaded/downloaded only via USB connection.

NOTES:

- When using the "Handshake method" for setting the UNIT Link-IDs in a tenant section, perform the settings in each section.
- A setting file is generated per device. Be careful not to misidentify each file name.

Setup example 2

First configure the settings for entrance stations and guard stations in a section, then use the GT Setup Tool to configure the settings for the GT-MCX

- 1** Configure the settings for entrance stations and guard stations in a section.
* Refer to the **GT SYSTEM SETTING MANUAL/Standard & Expanded System** for the setting methods.
- 2** Download the setting file (that includes link settings) of each entrance station, guard station. (→ **8-5**)
- 3** Apply the settings of each device to the GT-MCX by using the "Compare & Merge Settings" function. (→ **8-3**)
- 4** Upload the setting file of each GT-MCX. (→ **8-4**)
* The setting file of GT-BCXB-N can be uploaded/downloaded only via USB connection.

NOTE:

A setting file is generated per device. Be careful not to misidentify each file name.

4 DIP switch settings (confirm in advance)

Verify that the DIP switches on each device are set correctly prior to using the GT Setup Tool to configure settings.

* Confirm the DIP switch settings on each device by referring to the **GT SYSTEM SETTING MANUAL/Standard & Expanded System**.
For GT-MCX, see the next page.

The following settings are required.

Setting	Device
Set the system configuration to "Multi building system".	GT-DB, GT-DB-V, GT-DB-VN, GT-DMB-LVN, GT-DMB-N, GT-MKB-N, GT-BCXB-N
Set the type of the section that the device belongs to between "Main section" and "Tenant section".	GT-BCXB-N

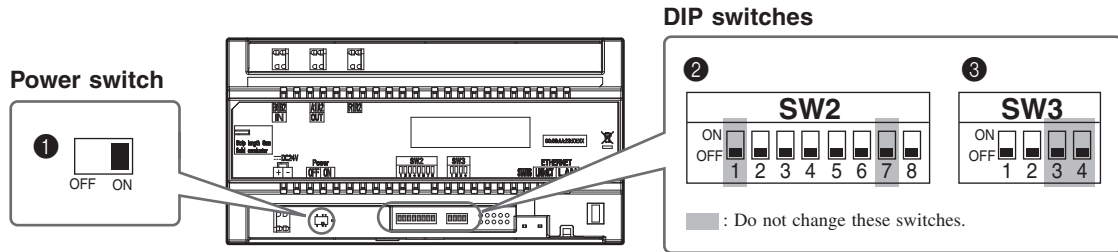
NOTE:

When any DIP switch setting has been performed, cycle power before performing other settings. Otherwise, the settings may not be changed.

4-1 Multi building control unit (GT-MCX)

The multi building control unit (GT-MCX) needs to be initially set up via the DIP switches before powering on. When DHCP is inactive, the IP address will be assigned based on the section ID setting. (192.168.1.α (α = 50 + Section ID))
Configuration will then need to be completed using the GT Setup Tool on a PC.

* It is recommended to discuss the installation and setting method with the person responsible for the installation in advance.



① Power switch

Set the switch to ON when using this unit.

② SW2

No.	Function	Default
2 to 6	Sets the local section ID. See "Section ID setting" on the next page for details.	2: OFF 3: OFF 4: OFF 5: OFF 6: OFF (ID 1)
8	Resets the Admin Passcode and Manager Passcode when this unit is initialized by setting this switch to ON for 2 seconds. * After reset, be sure to set this switch to OFF.	OFF

③ SW3

No.	Function	Default
1	Sets whether DHCP is active or not. ON: DHCP is inactive. An IP address decided by the PC Link Setting method will be assigned to the unit. The IP address is set as follows. 192.168.1.α (α = 50 + Section ID) [Example] Section ID = 11 IP Address = 192.168.1.61 * Detailed explanation of IP setting → 7-4 OFF: DHCP is active. An IP address will be assigned automatically.	OFF
2	Initialization of the settings. * The date/time is not initialized. Follow the procedure below.	OFF

How to initialize GT-MCX (③ SW3 - "2")

Procedure:

1 Turn the power switch OFF for the unit to be initialized.

2 Set DIP switch "2" in SW3 to ON position.

3 Turn the power switch ON.

The status LED of the unit will flash for approximately 30 seconds; wait until the LED stops flashing.

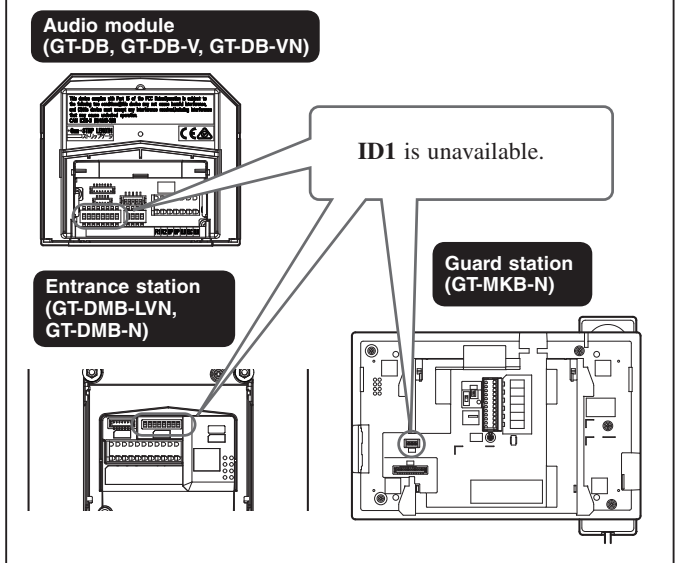
* In the case date & time has not been set, the LED will continue to flash in approximately 6 second intervals after 30 seconds have passed.

4 The unit has now been initialized. Set DIP switch "2" in SW3 to OFF position.

This step completes the initialization procedure.

NOTE :

ID1 is unavailable for the entrance station and the guard station.
(ID1 is used for GT-MCX in a multi building system.)



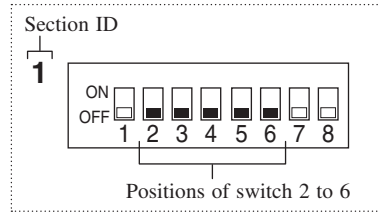
READ THIS BEFORE SETTING UP THE SYSTEM

Section ID setting

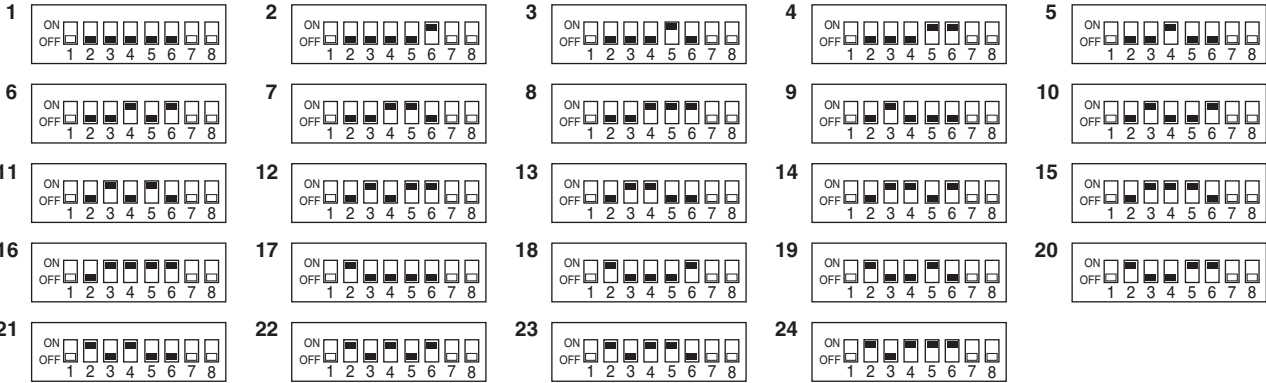
Set the section ID (1 to 32) for this unit by the combination of the switch 2 to 6 settings, as shown below.

* Details about "section" → 1

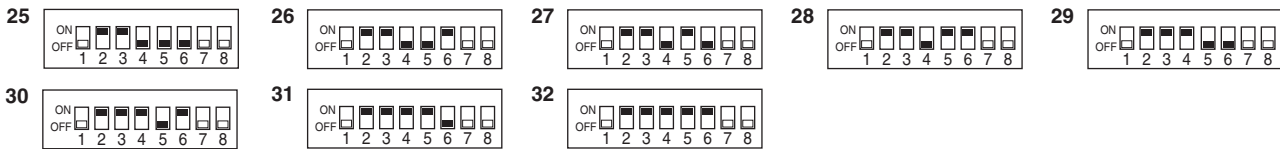
NOTE : Make sure not to duplicate the same ID.



ID1 to ID24: Tenant sections



ID25 to ID32: Main sections



Please use the following table to note section information.

Tenant section

ID	Section information	ID	Section information
1		13	
2		14	
3		15	
4		16	
5		17	
6		18	
7		19	
8		20	
9		21	
10		22	
11		23	
12		24	

Main section

ID	Section information	ID	Section information
25		29	
26		30	
27		31	
28		32	

SYSTEM SETUP USING GT SETUP TOOL

5 Outline of settings

When the installation of the GT system has finished, configure the settings for the whole system before using it by following the steps below. All settings can be completed by using the GT Setup Tool for Windows.

You can also configure the settings on an entrance station and guard station. The GT Setup Tool for Android devices can be used to configure and upload the settings for stations with NFC function.

NOTE:

Configure the settings correctly. If the settings have not been configured correctly, the system will not function as you planned.

Preparation before configuring the system settings

1. Decide the equipment configuration of the site (the number of entrance stations, guard stations, GT-BCXB-N, and the ID of them in each section).
2. Select the method of call from entrance stations and guard stations from the following 4 methods:

Name / # Search	Searching for a unit from a list or entering a unit # or resident name
Section List + Unit #	Searching for a section from a list, then a unit by entering a unit #
Unit Number	Select a unit by entering a unit #
Section # + Unit #	Select a section by entering a section #, then a unit #

3. Prepare the IP network information required for the settings.



Step 1

Initial setup

1. Install the GT Setup Tool. (→ [6-1](#))
2. Set the level of access authorization for the settings (Admin). (→ [6-2](#))
3. Create a new site. (→ [6-2](#))
 - Set the site configuration.
 - Set the number of guard stations and entrance stations according to the site configuration.



Step 2

- Configure the settings for each station. (→ [7](#))
(→ GT SYSTEM SETTING MANUAL/Standard & Expanded System - [9](#))

6 Initial setup

6-1 Installing the GT Setup Tool

Step 1

■ System requirements for PC

Your PC must meet the following minimum system requirements to use the GT Setup Tool.

OS	Windows 7 (Service Pack 1) Windows 8.1 Windows 10
Processor	1 GHz
System memory (RAM)	2 GB RAM
Hard disk	Total 100 MB (*1)
Run-time	Microsoft® .NET Framework 4.5 (*2)
Display	1024 (W) x 768 (H), 16-bit
USB port	Type-A

(*1): If the software is to be installed onto a drive other than C: drive, both the C: drive and the installation drive each require 50 MB or more of storage space.

(*2): If the specified Run-time is not installed on the PC, it will be installed automatically when installing the GT Setup Tool.

NOTES:

- The application may not run, or may not operate correctly (such as freezes occurring) on a PC with specifications below the necessary requirements.
- We recommend using a PC that exceeds the basic system requirements.

■ Installing the GT Setup Tool

* You may need to log on to your PC as the Administrator to install the GT Setup Tool.

1 Download the "Aiphone GT Setup Tool for Windows" installer on your PC from "www.aiphone.net".

2 Double-click the "Aiphone GT Setup Tool for Windows" installer, then follow the on-screen instructions.

* When a dialog box is displayed asking to install the following drivers, click **[OK]**.

- Aiphone GT Setup Tool USB driver
- Aiphone GT Setup Tool USB to UART Bridge Driver

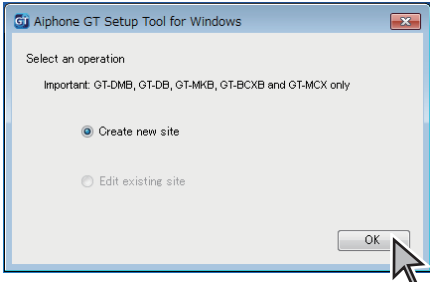
6-2 Creating a new site

Step 1

1 Double-click the "Aiphone GT Setup Tool for Windows" icon on the desktop, or run "gt_settingtool.exe".

The "Select an operation" dialog box opens.

2 Select "Create new site" when configuring a new system, then click **OK**.



The "Create new site: Site configuration" window opens.

* When changing the setting contents for an existing site (→ 6-3)

3 Set the following items, then click **Next**.

Item	Choices	Note
Setting authorization	Admin/Manager	Admin: Full access to all settings. Manager: Partial access to settings.
Site configuration	Single building system/ Multi building system	Select "Multi building system" (*1)

(*1): This manual is for configuring a multi building system. For a single building system, refer to the **GT SYSTEM Standard & Expanded system/SETTING MANUAL**.

* All items can be set when accessed with the **Admin** authorization. The items in cannot be set with the **Manager** authorization. (→ 7-3)

4 Set up the new site and its equipment configuration, then click **OK**.

Configure tenant sections

- Up to 24 tenant sections can be configured to MCX No. 1 to 24. (One GT-MCX is needed per section.)
- Set the number of expanded bus control unit, guard stations and entrance stations per section.

Equipment	Maximum number
Expanded Bus Control Unit (GT-BCXB-N)	1
Guard station	3
Entrance station	15

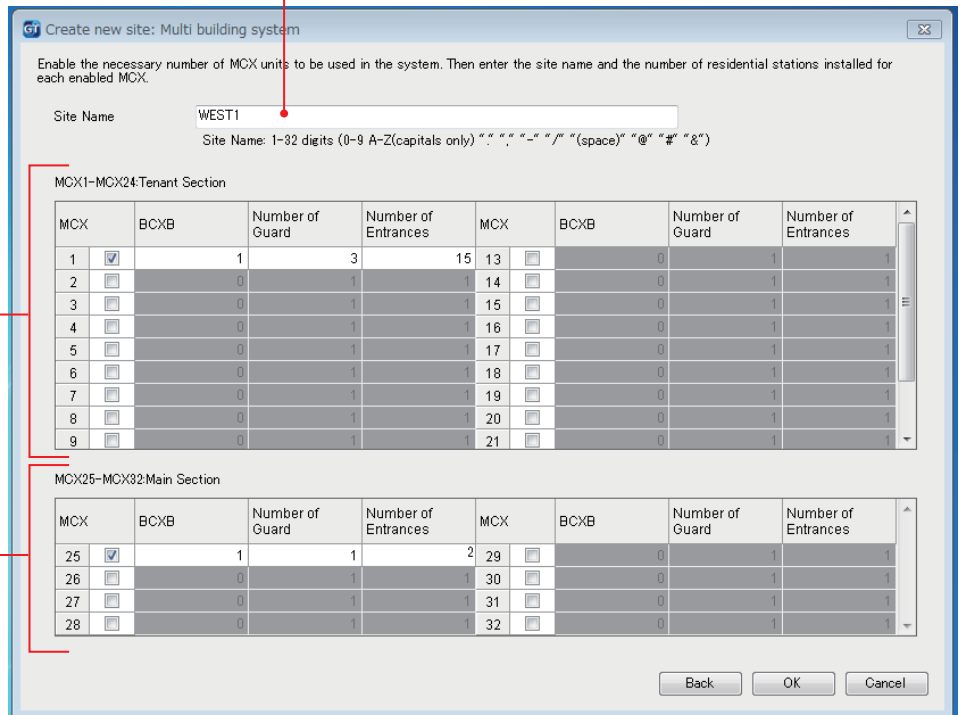
Configure main sections

- Up to 8 main sections can be configured to MCX No. 25 to 32. (One GT-MCX is needed per section.)
- Set the number of expanded bus control unit, guard stations and entrance stations per section.

Equipment	Maximum number
Expanded Bus Control Unit (GT-BCXB-N)	1
Guard station	3
Entrance station	15

"Create new site: Multi building" system window

Enter a new site name.

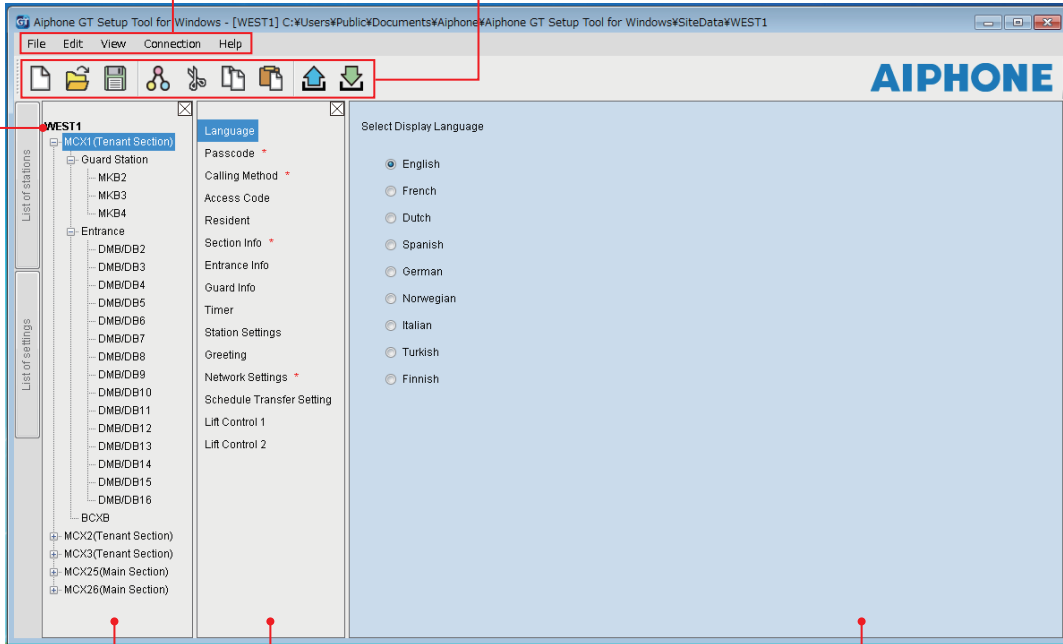


The setting screen for the site opens.

5 Configure the settings for the site.

Setting screen for the selected site

Site name Menu bar (→ **8-1**) Toolbar
 Shortcut icons for frequently used functions in the menu bar are displayed. (→ **8-1**)



Setting items for the selected station

Setting window for the selected item

List of stations (*2)

MCX	Multi building control unit [GT-MCX]
MKB	Guard station [GT-MKB-N]
DMB	Entrance station (all-in-one type) [GT-DMB-N(-LVN)]
DB	Entrance station (modular type) [GT-DB(-V)(-VN)]
BCXB	Expanded bus control unit [GT-BCXB-N]

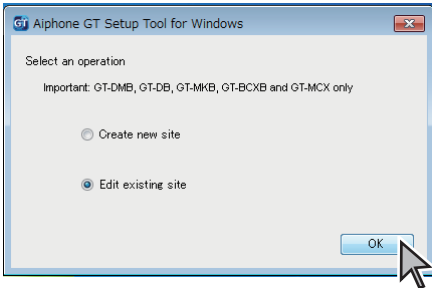
(*2): The numbers set at "Number of Guards" and "Number of Entrances" in step 4 are assigned to the "Station Names" displayed here starting from "1". The number of "Station Name" can be changed with "Edit" - "Change site configuration" on the toolbar. (→ **8-2**)

6-3 Changing the setting contents for an existing site

- 1 Double-click the "Aiphone GT Setup Tool for Windows" icon on the desktop, or run "gt_settingtool.exe".

The "Select an operation" dialog box opens.

- 2 Select "Edit existing site", then click **OK**.



The "Select Site" window opens.

- 3 Set the following items, then click **OK**.

Item	Choices	Note
Setting authorization	Admin/Manager	Admin: Full access to all settings. Manager: Partial access to settings.
Select Site	Select the target site from the pull-down menu.	-

The setting screen for the site opens.

- 4 Change the current setting contents. (→ **7**)

NOTE:

If the newest setting file is not on the PC, download it from the station, and then change the settings. (→ **8-5**)

7 System settings

Step 2

7-1 Registering resident information

Register information (unit #, resident name, etc.) for each resident.
Follow steps **1** to **3** below.

* The screen below is an example accessed with **Admin** authorization.

(*1): Available only when accessed with the **Admin** authorization.

3 Register resident information.

1 Select a station to edit.

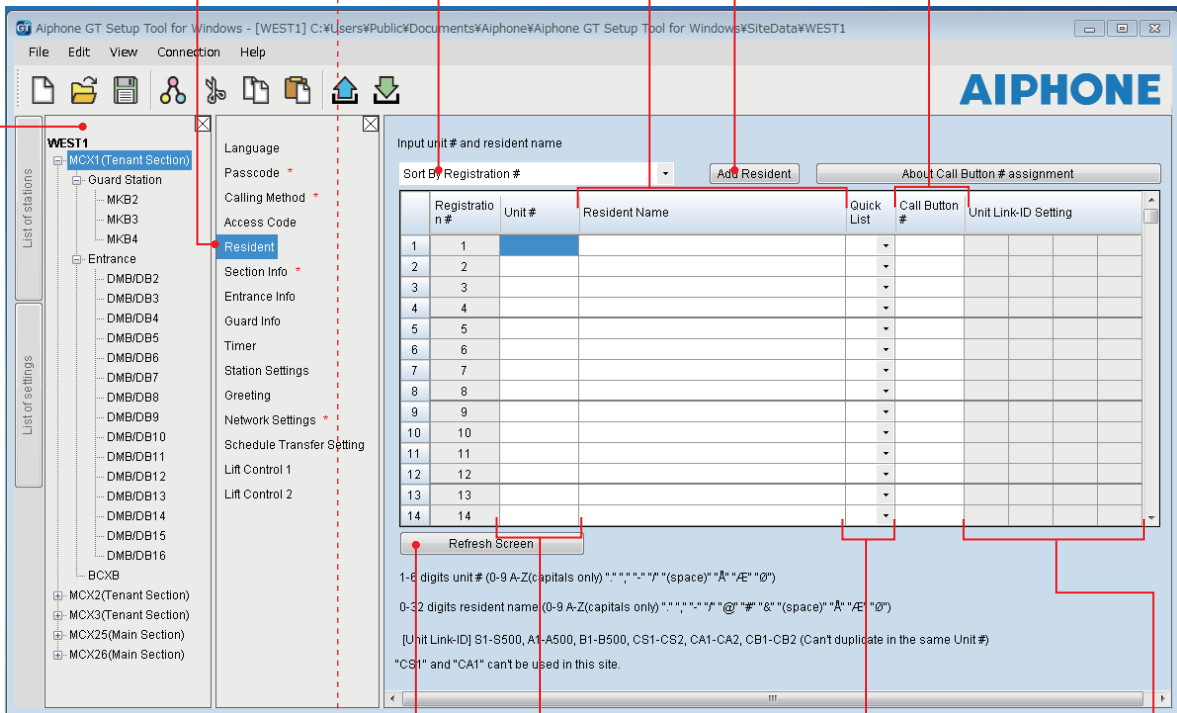
2 Select "Resident".

Select the sorting method of the list.

Enter resident name.

Click to add a resident name to the same unit.
Up to four names can be registered to one unit.

If applicable, assign a call button of the call switch module **GT-SW**. (*1)



Enter unit #. (*1) **Required**

Add desired resident to the quick list of the entrance station (GT-DMB-N(LVN)) screen by selecting 1 to 4.

* Up to 4 residents can be added to the quick list.

(→ **GT SYSTEM SETTING MANUAL/Standard & Expanded System**)

* This setting is applied to the "SPEED DIAL" setting of GT-NSB.

Click to refresh the screen.

* When refreshed, the setting of "UNIT Link-ID Setting" is enabled.

Enter the UNIT Link-ID(s) to each residence (unit). (*1)

* Up to 4 UNIT Link-IDs can be linked per residence (unit).

7-3 Station settings

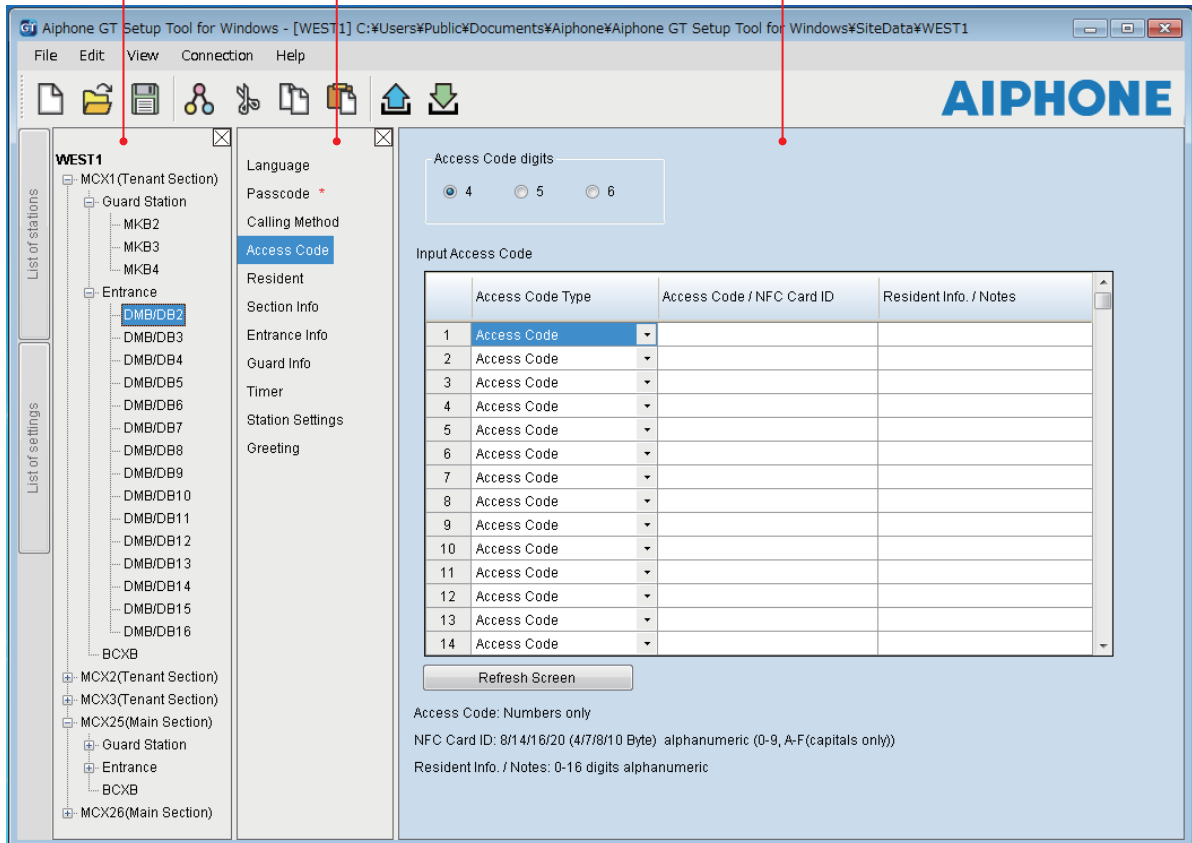
Step 3

Configure settings for guard stations and entrance stations individually.
Follow steps 1 to 3 below.

1 Select a station to edit.

2 Select a setting item.
* Refer to the table below for details.

3 Configure the detailed settings.
* Refer to the table below for details.



Item	Description	Setting value/choices	Default
Language	Select the screen display language.	English / French / Dutch / Spanish / German / Norwegian / Italian / Turkish / Finnish	English
Passcode Required	Set the passcode for uploading/downloading setting data. NOTE: Do not register the ID of the Android device as the passcode.	-	-
Admin Passcode	Set a passcode for accessing with administrator authorization.	Enter "*" and 4 digits number. ⚠ It is recommended to change the default passcode to a unique one when using the GT Setup Tool for the first time.	*1111
Admin NFC Card ID	Set a NFC Card ID # for accessing with administrator authorization.	8/14/16/20 (4/7/8/10 Byte), alphanumeric (0-9, A-F (capitals only))	-
Manager Passcode	Set a passcode for accessing with manager authorization.	Enter "#" and 4 digits number. ⚠ It is recommended to change the default passcode to a unique one when using the GT Setup Tool for the first time.	#2222
Manager NFC Card ID	Set a NFC Card ID # for accessing with Manager authorization.	8/14/16/20 (4/7/8/10 Byte), alphanumeric (0-9, A-F (capitals only))	-
Calling Method Required	Select the method of searching for a unit to call.	Name / # Search Section List + Unit # Unit Number Section # + Unit #	Name / # Search

* All items can be set when accessed with the **Admin** authorization.
The items in cannot be set with the **Manager** authorization.

SYSTEM SETUP USING GT SETUP TOOL

Item	Description	Setting value/choices	Default	
Access Code (entrance station only)	Set the door release method (either entering an access code or using NFC) and the access code (or ID) per residence/tenant. NOTE: Do not register the ID of the Android device as the access code.	Access Code digits: 4/5/6	4	
		Access Code Type: Access Code/NFC Card ID	Access Code	
		Access Code: Numbers only (Select 4, 5 or 6 digits.) NFC Card ID: 8/14/16/20 (4/7/8/10 Byte), alphanumeric (0-9, A-F (capitals only))	-	
		Resident Info./Notes: 0-16 digits alphanumeric	-	
Resident	(→ 7-1)	-	-	
Section Info Required	Enter the section information for each section ID. (→ 7-2)	<ul style="list-style-type: none"> Section #: 1-4 digits Section Name: 0-32 digits IP Address [IPv4]: 1.0.0.1-223.255.255.254 [IPv6]: 2000::/3 or FD00::/8 	-	
Entrance Info	Enter the entrance station information. * ID1 is unavailable for an entrance station in a multi building system.	<ul style="list-style-type: none"> Section ID: 1-32 Entrance ID: 2-16 Entrance #: 1-6 digits Entrance Name: 0-32 digits 	-	
Guard Info	Enter the guard station information. * ID1 is unavailable for a guard station in a multi building system. Set the followings per tenant section (GT-MCX). <ul style="list-style-type: none"> Call Destination (Max. 4): Set a guard station in main section that will receive a call from residential/tenant station (when "Schedule Transfer Setting" is not set). Up to 4 guard stations can be selected from main sections. Schedule Transfer Destination (Max. 4): Set a guard station in main section that will receive a call from residential/tenant station during the scheduled times (set at "Schedule Transfer Setting"). Up to 4 guard stations can be selected from main sections. Emergency Alarm Destination (Max. 4): Set a guard station that receives emergency alarms. Up to 4 guard stations can be selected. 	<ul style="list-style-type: none"> Section ID: 1-32 Guard ID: 2-4 Guard #: 1-6 digits Guard Name: 0-32 digits Call Destination (Max. 4): Up to 4 guard stations Schedule Transfer Destination (Max. 4): Up to 4 guard stations Emergency Alarm Destination (Max. 4): Up to 4 guard stations 	-	
Timer	Set the duration of each timer operation.	-	-	
Operation Timer	Set the duration of operation.	15-99 sec.	15 sec.	
Program Timer	Set the duration of program mode.	30-99 sec.	60 sec.	
Call Duration	Set the duration of a call.	30-99 sec.	45 sec.	
Station Settings	Configure settings unique for each station.	-	-	
For guard station	Call-In Output	Set whether to make calls to guard stations transferred to the RYC-RYC terminal (ON).	ON / OFF	ON
	Emergency Alarm Output	Set whether to make emergency alarms transferred to the RYK-RYK terminal (ON).	ON / OFF	ON
	Sort method	Set the sorting method for searching.	Sort By Name / Sort By Unit #	Sort By Name
	Video Call Entrance ID	Set the entrance station that can be displayed by pressing the VIDEO CALL button.	N/A Entrance ID1 (not applicable) Entrance ID2	N/A
	Unit Calling	Enable (ON) or disable (OFF) calling a residential/tenant station from a guard station.	ON / OFF	ON
For entrance station	Monitor Setting ^(*) (GT-DMB only)	Enable (ON) or disable (OFF) monitoring an entrance station from a residential/tenant station.	ON / OFF	OFF
	Camera Display ^(*) (GT-DMB only)	Set the display mode of video during a call.	ZOOM WIDE ZOOM 3s, WIDE WIDE 3s, ZOOM	ZOOM
	Visibility	Enable (ON) or disable (OFF) the backlight adjustment.	ON / OFF	OFF

* All items can be set when accessed with the **Admin** authorization.
The items in cannot be set with the **Manager** authorization.

(*1): For a modular type entrance station, this setting can be done only by using the setting switch on the station.

SYSTEM SETUP USING GT SETUP TOOL

Item	Description	Setting value/choices	Default	
Station Settings For entrance station	Display Unit #	Set whether to show unit # and resident name (ON) or resident name only (OFF) on the entrance station display.	ON / OFF	ON
	Guide Language (*1) (GT-DMB only)	Set whether to use the voice guidance, and select the language of guidance. • No Guidance: The voice guidance is not used. • Tone: A sound is used instead of the voice guidance.	No Guidance / English / French / Dutch / Spanish / German / Norwegian / Tone	No Guidance
	Sort method	Set the sorting method for searching.	Sort By Name / Sort By Unit #	Sort By Name
	Standby Screen	Set the screen type displayed in standby mode.	Greeting Operation Picture (GT-DMB only) Quick List (GT-DMB only)	Greeting
	Screen Theme (GT-DMB only)	Set the screen background.	A/B	A
	Door Release Timer (*1) (GT-DMB only)	Set the duration of door release.	0-20 sec. (0 = Momentary)	0=Momentary
	Light or CCTV (*1) (GT-DMB only)	Select the optional device connected to an entrance station.	Light Control CCTV Switch	Light Control
	Camera Priority (GT-DMB only)	Set the priority of cameras.	Internal Camera External Camera	Internal Camera
	Night Lighting (*1) (GT-DMB only)	Enable or disable the automatic night lighting function of an entrance station illuminator LED.	Auto Lighting Always Off	Auto Lighting
	Call Button # for Light Control (GT-DB only)	Set one of the call buttons on the GT-SW as the light button.	No entry, 1-100	(No entry)
	Camera Preset	Set the position of camera in the zoom mode.	[1]-[9]	[5]
Brightness (GT-DMB only)	Adjust the screen brightness.	0-9 (Dark-Bright)	5	
Greeting (GT-NSB and GT-DMB only)	-	-	-	
Message	Enter greeting message.	Up to 160 characters	-	
Scroll Speed	Set the scroll speed of greeting message.	0-9	5	
Network Settings	Configure the network settings for the site. * When the IP address or a related setting is changed and uploaded, GT-MCX will restart. It will take approximately 1 minute to restart.	-	-	
IP Version Required	Set the version of network.	IPv4/IPv6	IPv4	
IP Address Required	(→ 7-4)	-	-	
Subnet Mask (IPv4 only) Required	Set the subnet mask when the IP version is set to IPv4 only.	(Select from the pull-down list.)	255.255.255.0	
Default Gateway	Set the default gateway.	IPv4: 1.0.0.1 - 223.255.255.254 IPv6: 0::0 - ffff :ffff :ffff :ffff :ffff :ffff :ffff :ffff	-	
Primary DNS Server	Set the primary DNS server.	IPv4: 1.0.0.1 - 223.255.255.254 IPv6: 0::0 - ffff :ffff :ffff :ffff :ffff :ffff :ffff :ffff	-	
Secondary DNS Server	Set the secondary DNS server.	IPv4: 1.0.0.1 - 223.255.255.254 IPv6: 0::0 - ffff :ffff :ffff :ffff :ffff :ffff :ffff :ffff	-	
NTP Server	Set the NTP server to be synchronised with the PC. * This setting is required for setting the current time.	Domain name format: 4-253 digits (0-9, A-Z, a-z, "_", ".")	-	
NTP Port #	Set the port # to connect with the NTP server.	1-65535	123	
Enable NTP	Enable or disable the NTP server.	Yes/No	No	
Time Zone	Set the time zone.	(Select from the pull-down list.)	UTC 00:00 Greenwich Mean Time	
Daylight Savings Time	Enable or disable daylight savings time.	None/+1 (h)	None	
Connection Port # Required	Set the port # to connect the PC with this system.	1-65535	51000	
Audio Port # Required	Set the port # for audio connection.	1-65535	51002	
Video Port # Required	Set the port # for video connection.	1-65535	51003	

* All items can be set when accessed with the **Admin** authorization.
The items in cannot be set with the **Manager** authorization.

(*1): For a modular type entrance station, this setting can be done only by using the setting switch on the station.

SYSTEM SETUP USING GT SETUP TOOL

Item	Description	Setting value/choices	Default	
Network Settings	Door Release Port#	Set the port # to connect with electric door strikes. * Set this when the door release function is used between sections.	1-65535	51001
	Door Release Password	Set the password to enable door release. * Set this when the door release function is used between sections.	1-32 digits (A-Z, a-z, 0-9)	-
	Video Quality	Set the video quality taken by entrance station cameras. * After this is changed and uploaded, the GT-MCX will restart. It will take approximately 1 minute to restart.	High/Middle/Low	High
Schedule Transfer Setting	Set a period of time to transfer calls from entrance stations to the designated guard stations. Up to two schedules can be set. • Schedule Transfer Setting 1 • Schedule Transfer Setting 2 * The current time must be set to use this function. (→ [8-6])	Start Time 00:00 - 23:59 End Time 00:00 - 23:59	-	
Lift Control 1 (GT-BCXB-N only)	Set the connection for each GTW-LC. (GTW-LC cannot be installed in a main section.) * The connection status can be checked by clicking [Check] . • Connection • Output Type Select either N.O. (Normally Open) or N.C. (Normally Closed) • Timer Set the timer for enabling lift control.	• Connection: OFF/ON • Output Type: N.O./N.C. • Timer: 1-600 sec.	OFF - -	
Lift Control 2 (GT-BCXB-N only)	Activate relay in corresponding GTW-LC for each resident/tenant station.	1-20	-	

* All items can be set when accessed with the **Admin** authorization.
The items in cannot be set with the **Manager** authorization.

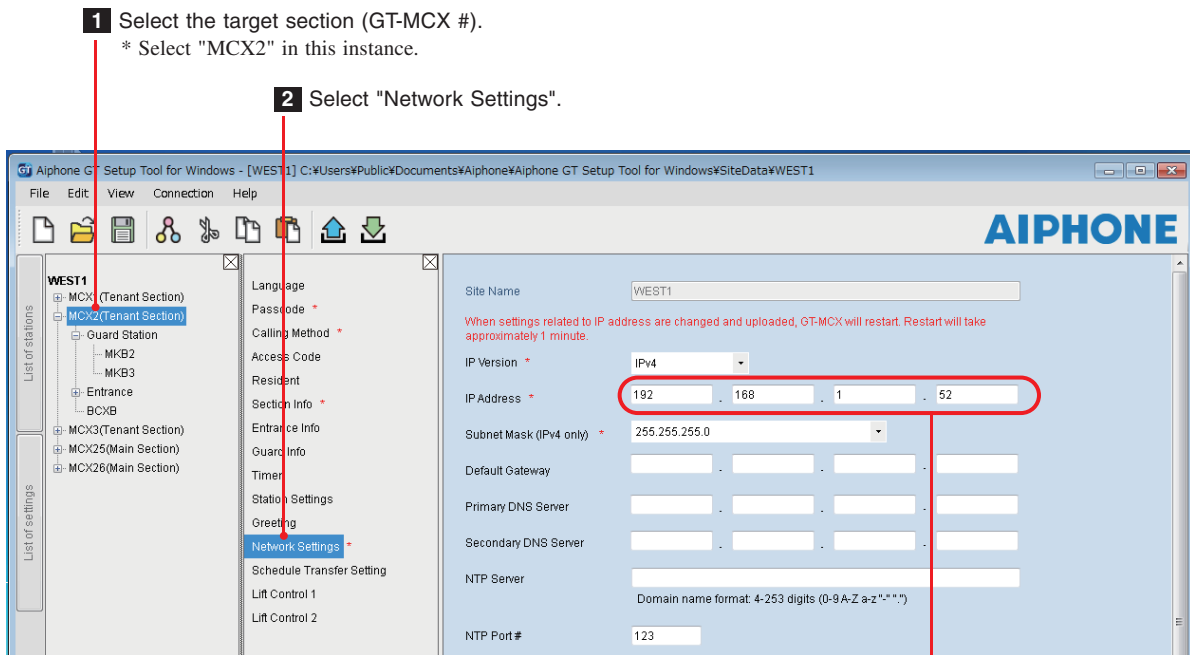
7-4 Changing the IP address of a section

The IP address of a section (GT-MCX) is preset by setting the DIP switch on the GT-MCX at the time of installation. (→ [4-1](#))
 The IP address of a section can be changed by using the GT Setup Tool for Windows as follows.

1 Run the GT Setup Tool for Windows and open the setting screen. (→ [6-2](#) or [6-3](#))

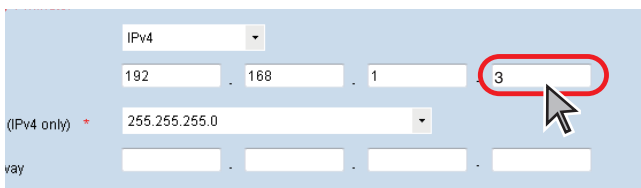
2 Operate as follows.

(e.g.) When changing the IP address of MCX2 from [192.168.1.52] to [192.168.1.3].



The IP address is preset as [192.168.1. α ($\alpha = 50 + \text{Section ID}$)].
 * This shows that the ID is set to "2" by the DIP switch on the GT-MCX.

3 Change the IP address by entering the desired value.

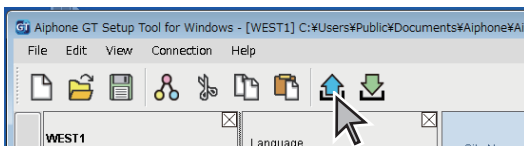


4 Click .

"Save Settings" pop-up window opens.

5 Click **Yes** to save the setting.

6 Click  (Upload).

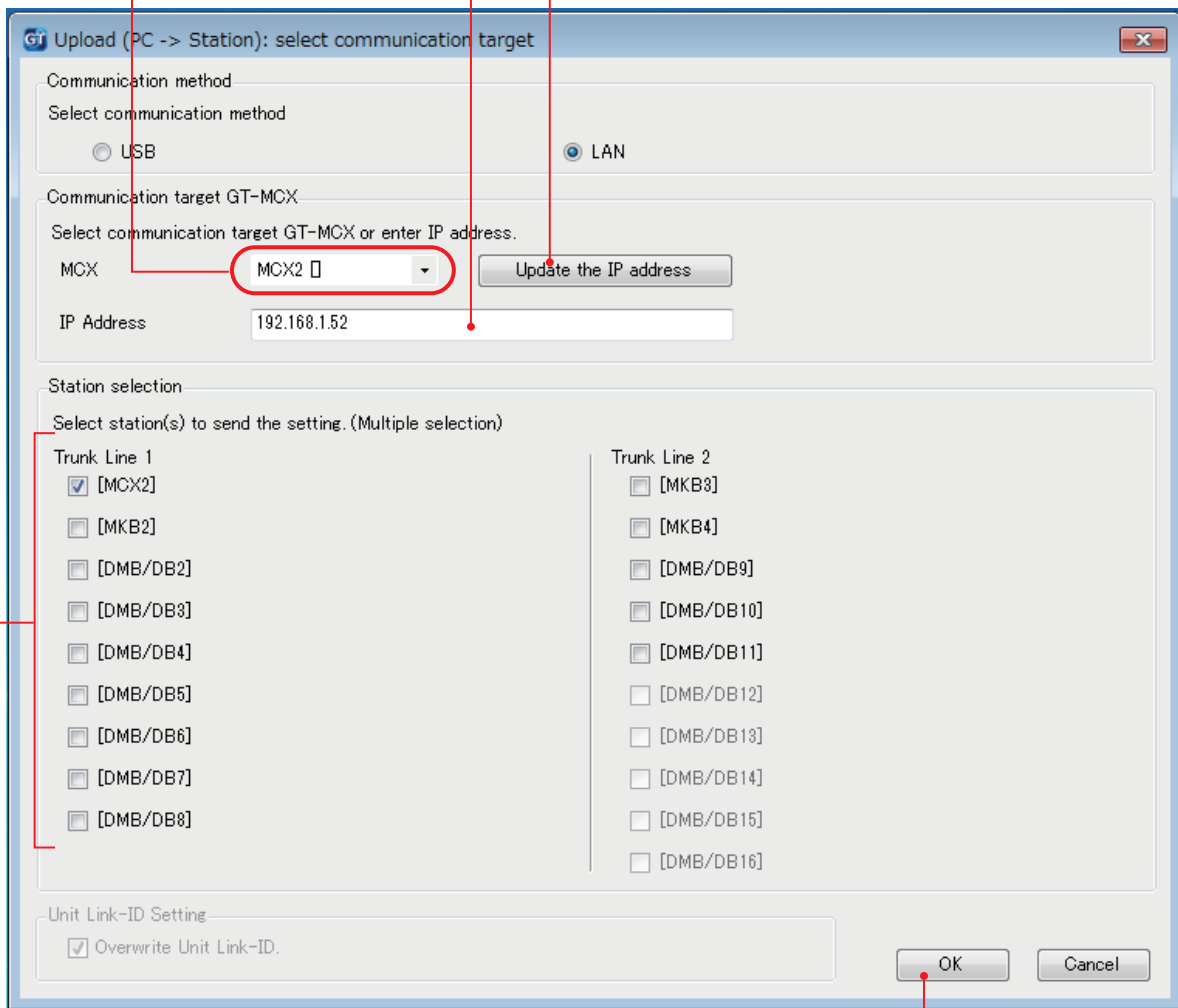


"Upload (PC -> Station): select communication target" window opens.

7 Operate as follows.

1 Select "MCX2".

2 Click **Update the IP address** to automatically enter the current IP address (before changes), or manually enter it.



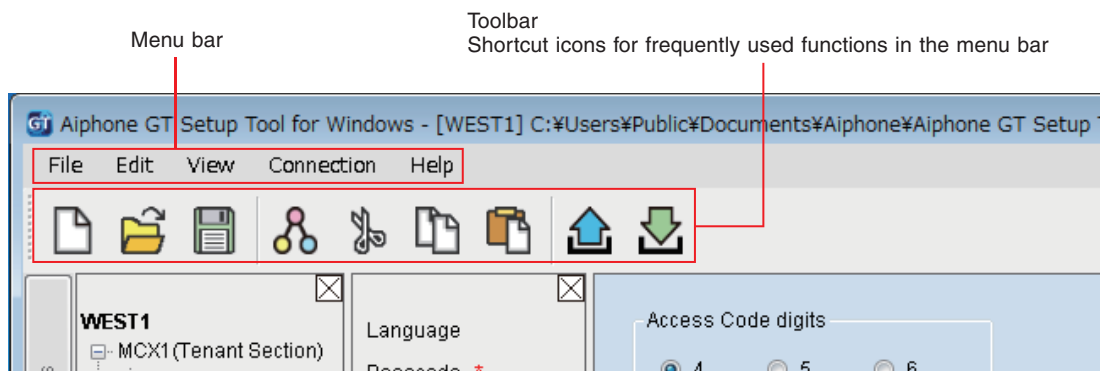
3 Check "MCX2".

4 Click.



Changing the IP address is complete.

8 Functions in the menu bar



8-1 Function list

Menu	Function	Toolbar icon	Description
File	Create new site		Opens the "Create new site: Site configuration" window. (→ 6-2)
	Edit existing site		Opens the "Select Site" window. (→ 6-3)
	Save Settings		Saves all the setting contents of the current site. (See the next page.)
	Backup Settings	-	Saves all the setting contents of the current site with a different file name.
	Exit	-	Exits the GT Setup Tool.
Edit	Change site configuration	-	Changes the number of sections (GT-MCX), guard stations, entrance stations, expanded bus control unit, and the site name. The number of "Station Name" of each guard station or entrance station can also be changed. (→ 8-2)
	Compare & Merge Settings		The setting contents of two stations or files can be merged by comparing them on the same screen. (→ 8-3)
	Cut		Cuts the selected item or text.
	Copy		Copies the selected item or text.
	Paste		Pastes the copied item or text.
View	Language	-	Selects the screen display language of the GT Setup Tool from the following: English/Français (French)/Nederlands (Dutch)/Español (Spanish)/Deutsch (German)/Norsk (Norwegian)/Italiano (Italian)/Türk (Turkish)/Suomi (Finnish)
	Toolbars	-	Enables/disables the toolbar.
Connection	Upload (PC -> Station)		Setting data configured by the GT Setup Tool can be uploaded to a multi building control unit (GT-MCX), an expanded bus control unit (GT-BCXB-N), entrance stations, and guard stations. (→ 8-4)
	Download (Station -> PC)		Setting data configured on a multi building control unit (GT-MCX), an expanded bus control unit (GT-BCXB-N), entrance stations, and guard stations can be downloaded to the GT Setup Tool. (→ 8-5)
	Upload Picture	-	An image (.gtnb) can be uploaded from the PC to an all-in-one type entrance station GT-DMB-N(-LVN) that is to be displayed on the screen of the GT-DMB-N(-LVN) in standby mode. * An image (.bmp 320 x 240, 24bit) must be converted to a dedicated format (.gtnb) before uploading by using the converter that can be downloaded from the Aiphone website "www.aiphone.net". * Connect a GT-DMB-N(-LVN) to the PC with a USB cable.
	Set current time	-	Sets the current time for the target section. Procedure: Select the section (MCX#) and enter IP address and passcode, then set the current time. (→ 8-6)
	Station Search	-	Displays the IP addresses of all connected devices. Procedure: Set the IP version to IPv4 or IPv6, and then click Search .
	Firmware Update	-	Updates the firmware of a multi building control unit (GT-MCX).
	Download log	-	Call logs can be downloaded from the multi building control unit (GT-MCX) to the PC.

SYSTEM SETUP USING GT SETUP TOOL

Menu	Function	Toolbar icon	Description
Connection	COM Port	-	Sets the COM port of the PC that is used for a USB connection with a GT-BCXB-N.
	Network Interface Card: NIC	-	Sets the network interface card.
Help	Version	-	Displays the current version of the GT Setup Tool.

Destination of saved files

C:\Users\Public\Documents\Aiphone\Aiphone GT Setup Tool for Windows\SiteData

Style of folder names and file names

	Single building system	Multi building system
Folder name	Site name	Site name
Subfolder name	-	Station (e.g. MCX26)
File name	Station (e.g. DMB1.gtn)	Station (e.g. DMB2.gtn)

8-2 Changing site configuration

1 From the "Edit" menu, select "Change site configuration".

"Change site configuration: (site name)" window appears.

2 Select "Change Section", "Change Section Configuration", or "Change Site Name" to display the corresponding window.

The screen example below is for "Change Section Configuration".

3 Change configurations, then click **Apply** or **OK** to save the changes.

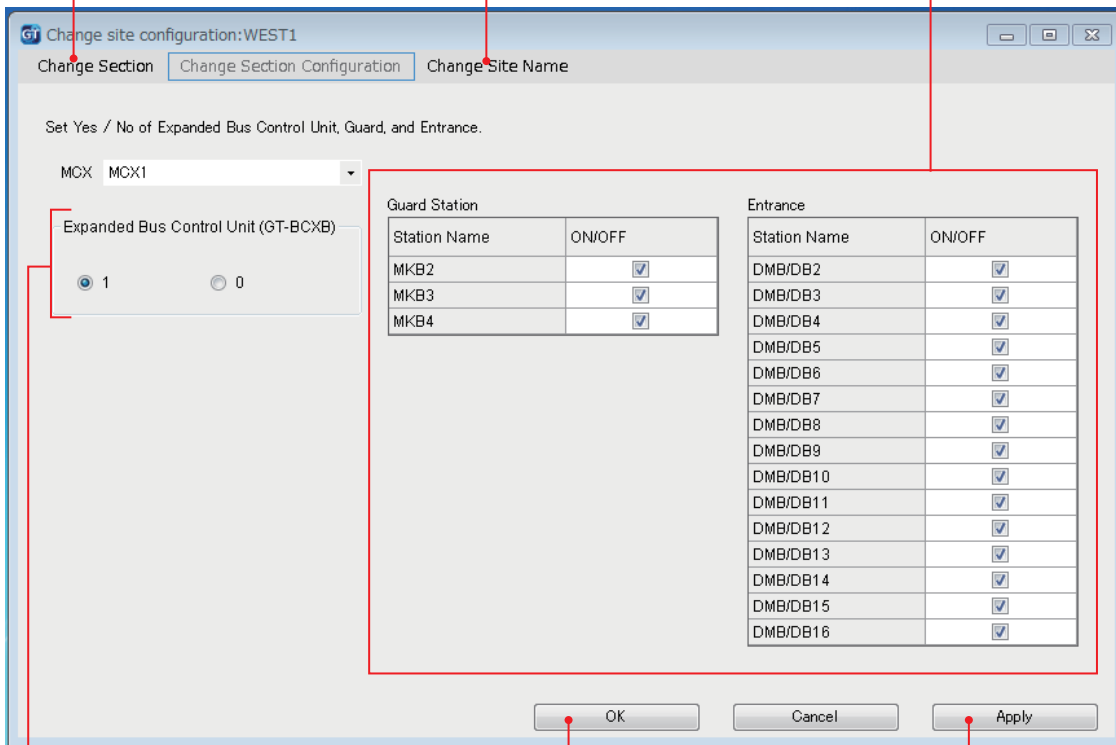
Check (ON) the guard stations and entrance stations to use, and uncheck (OFF) the stations not to use.

* In an expanded system, the guard stations and entrance stations connected to the common trunk line 2 of GT-BCXB-N and GT-VBX should be set to the following Station names.

Guard station: MKB3, MKB4
Entrance station: DMB/DB9 to DMB/DB16

Click to change the sections to use.

Click to change the site name.



Set whether to use an expanded bus control unit (GT-BCXB-N)

When using, select "1".
When not using, select "0".

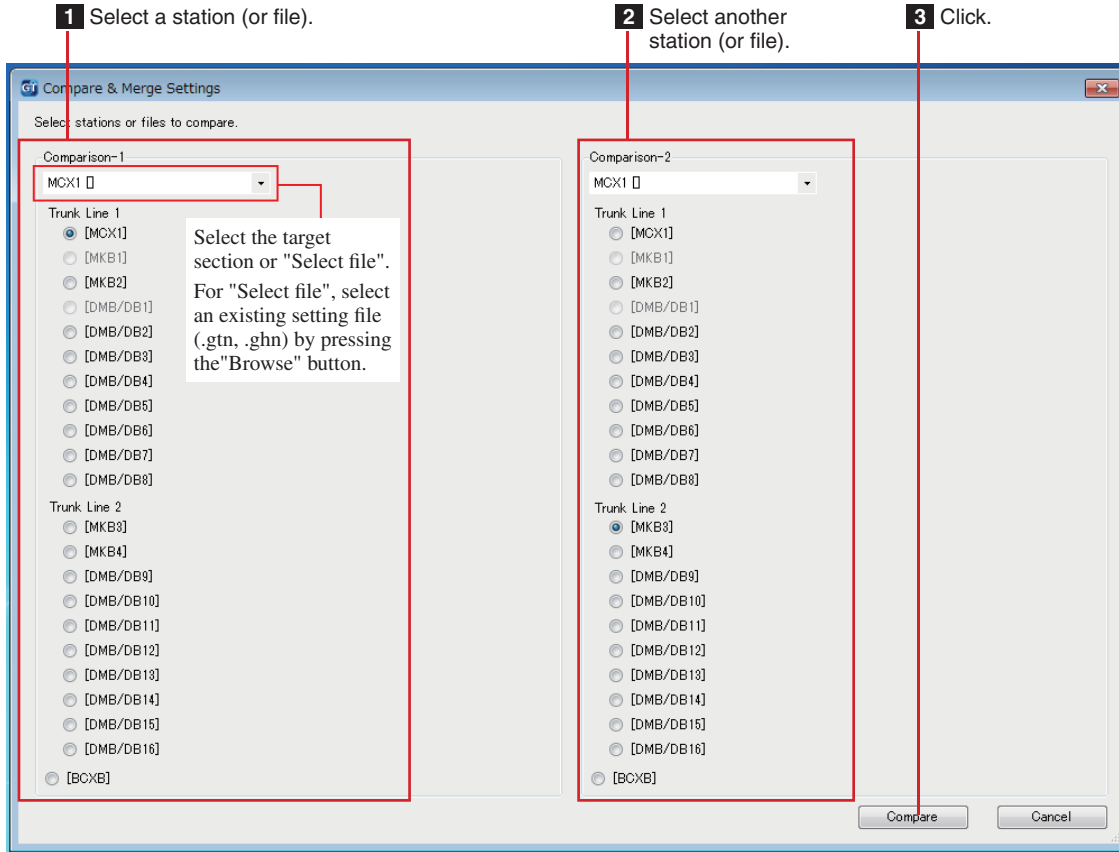
Click to save the changes and close this window.

Click to save the changes and leave this window open.

8-3 Comparing and merging setting contents between stations or files

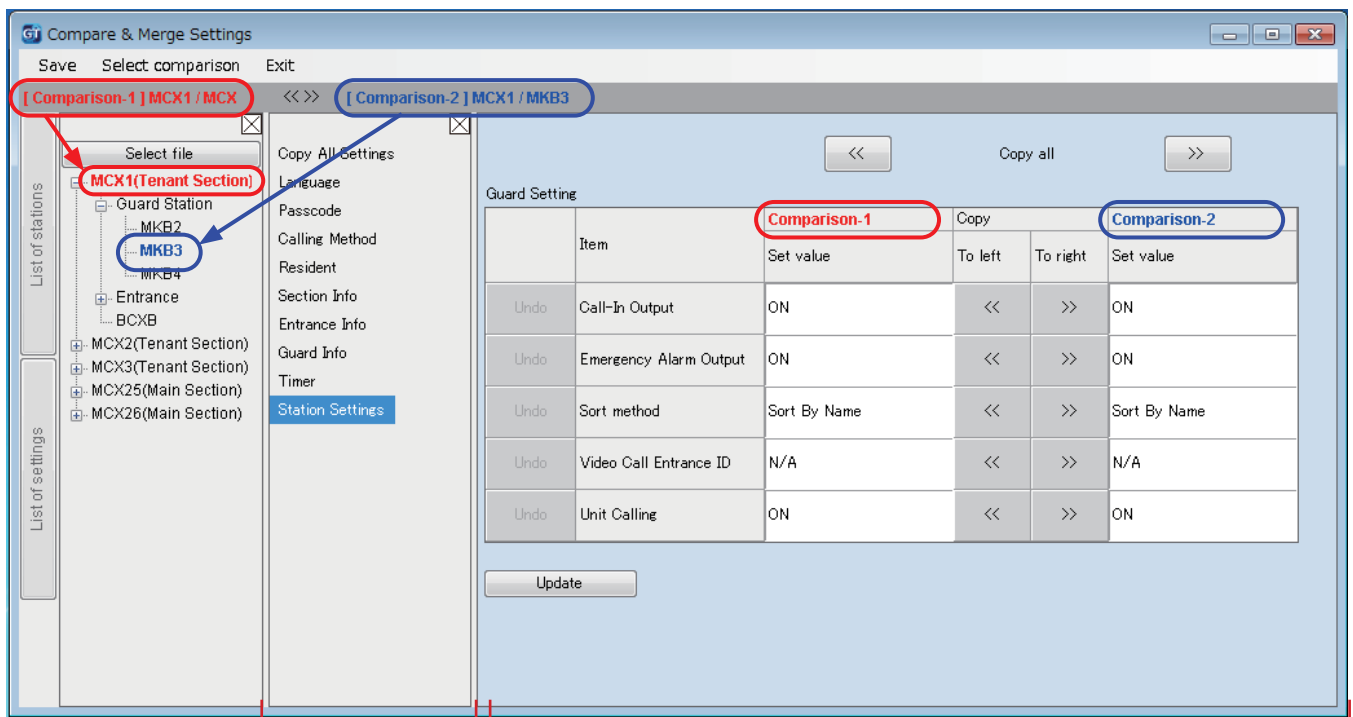
1 From the "Edit" menu, select "Compare & Merge Settings", or click  on the toolbar.
"Compare & Merge Settings" window appears.

2 Select the stations (or files) to compare as "Comparison-1" and "Comparison-2", then click **Compare**.



3 Compare the setting contents of the two stations (or files).

The stations (or files) are color-coded red and blue.



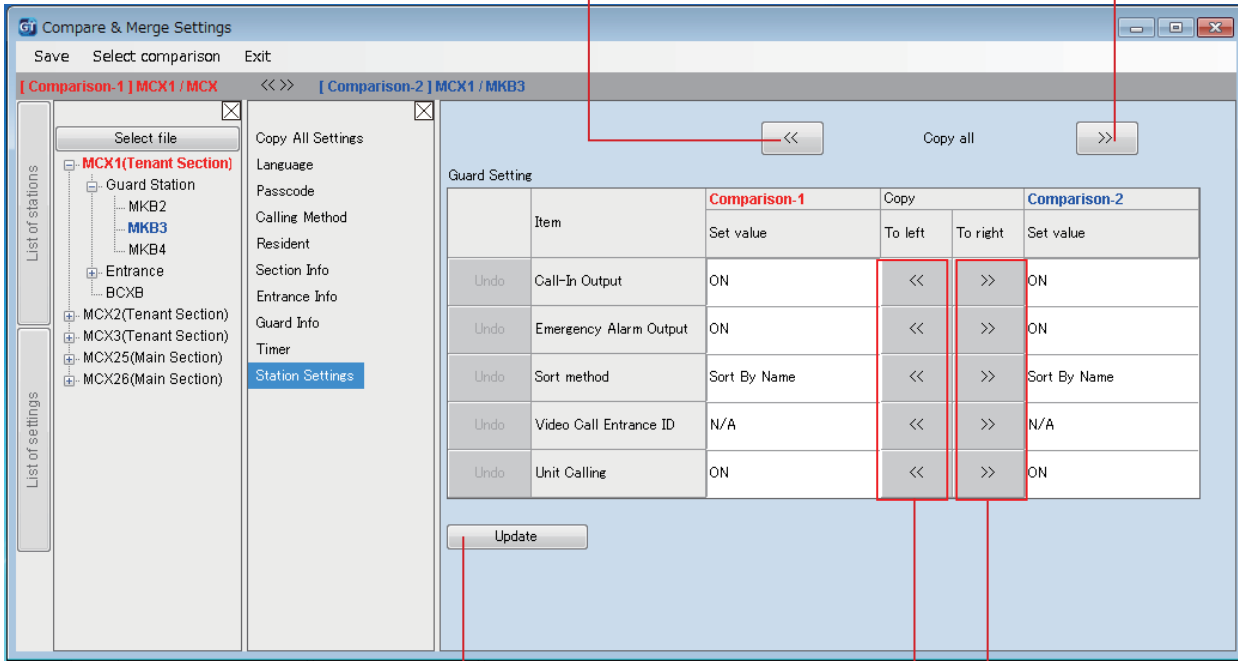
1 Select the setting item.

2 Compare the setting contents.

4 If necessary, overwrite the contents of either station (file) with those of the other station (file).

Click to overwrite all contents of "Comparison-1" shown in the list with those of "Comparison-2".

Click to overwrite all contents of "Comparison-2" shown in the list with those of "Comparison-1".



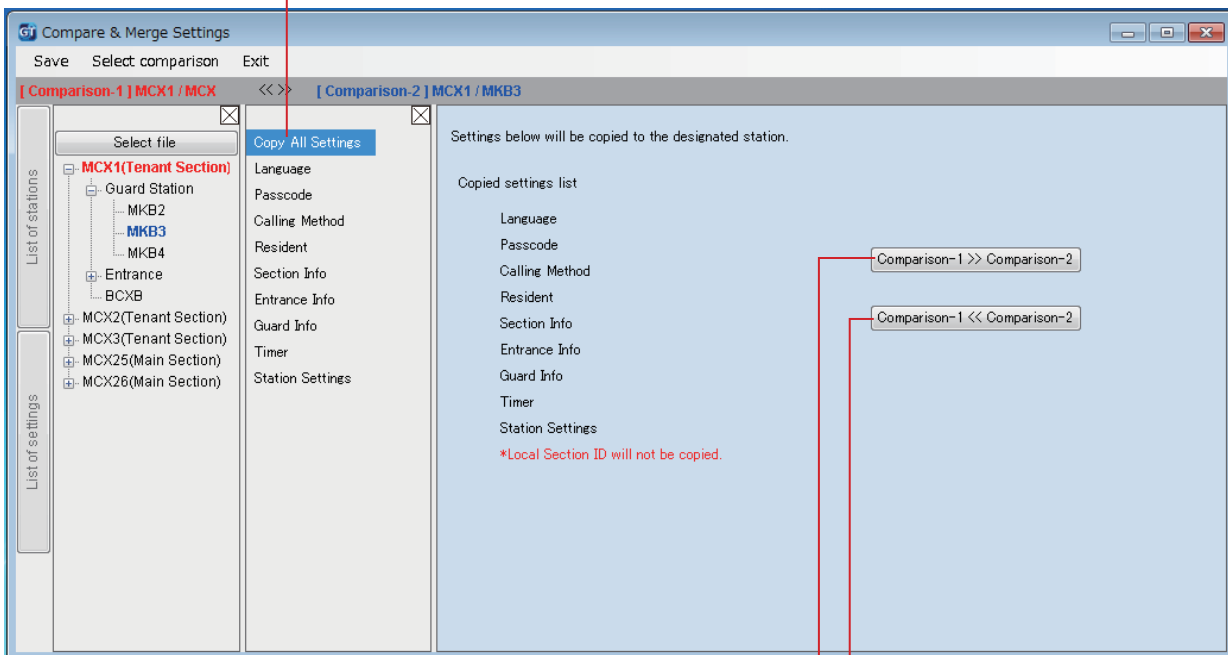
Click to apply the changes in this window.
(This operation will not save the changes.)

Click to overwrite the content of "Comparison-1" with that of "Comparison-2" per item.

Click to overwrite the content of "Comparison-2" with that of "Comparison-1" per item.

■ To overwrite all the setting contents of a station (or file) with those of the other station (or file)


1 Click.



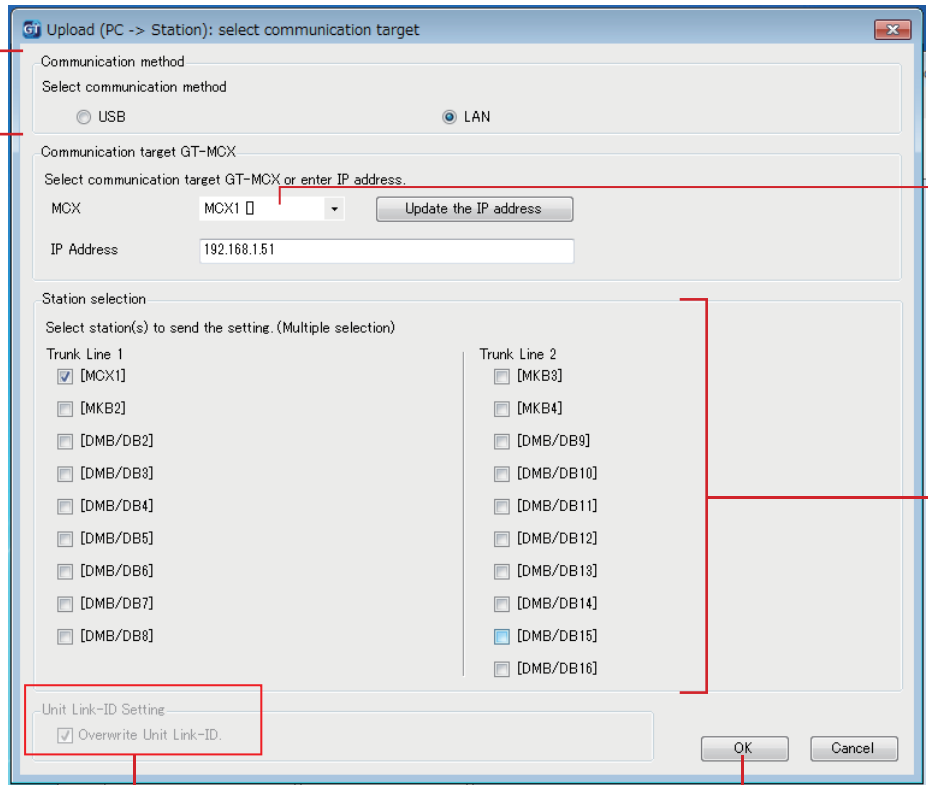
2 Click to overwrite all the setting contents of "Comparison-2" with those of "Comparison-1".

Click to overwrite all the setting contents of "Comparison-1" with those of "Comparison-2".

8-4 Uploading setting data configured by the GT Setup Tool to a multi building control unit, entrance station, guard station or expanded bus control unit

1 From the "Connection" menu, select "Upload (PC -> Station)", or click  on the toolbar.
 "Upload (PC -> Station): select communication target" screen appears.

2 Select the target station, then click **OK**.




2 Select the target section (MCX #).

3 Select the target station.

4 Click when updating the Unit Link-ID setting.

5 Click.

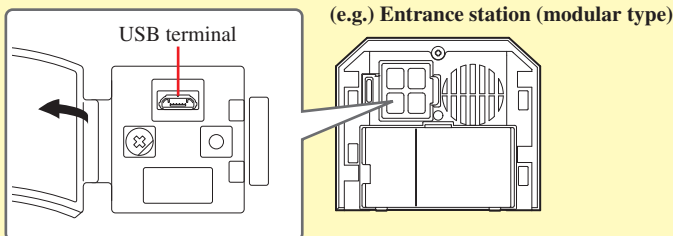
 Do not check this box when you will not update the Unit Link-ID setting.

1 Select the communication method with the target station.

* Using "LAN" is recommended for uploading/downloading the setting data.

When using "USB", connect the PC to the station via the USB terminal on the station.


* Be sure to connect only one station to a PC.



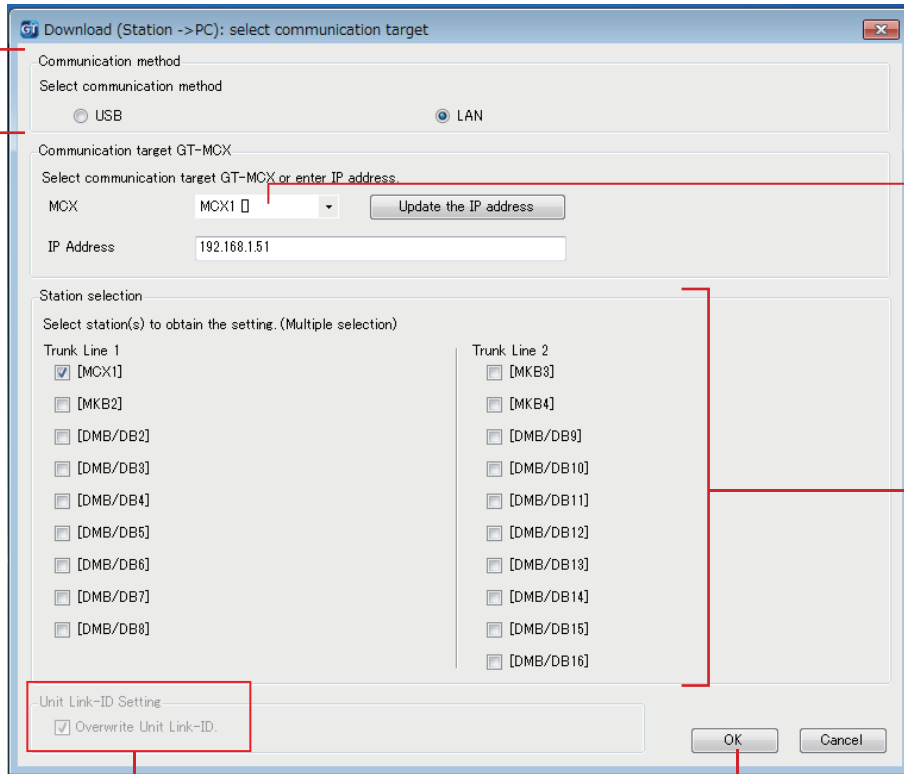
NOTE: Set the "COM Port" setting to the USB terminal number that is used for connecting to GT-BCXB-N. (→ **8-1**)

- NOTES:**
- When uploading the setting data, entering a passcode is required.
 - When "LAN" is selected, data uploading is not possible to an expanded bus control unit GT-BCXB-N.

8-5 Downloading setting data on a multi building control unit, entrance station, guard station or expanded bus control unit to the GT Setup Tool

1 From the "Connection" menu, select "Download (Station -> PC)", or click  on the toolbar.
 "Download (Station -> PC): select communication target" screen appears.

2 Select the target station, then click **OK**.




2 Select the target section (MCX #).

3 Select the target station.

4 Click when updating the Unit Link-ID setting.

5 Click.

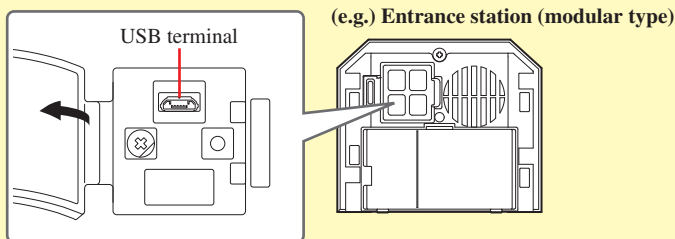
 Do not check this box when you will not update the Unit Link-ID setting.

1 Select the communication method with the target station.

* Using "LAN" is recommended for uploading/downloading the setting data.

When using "USB", connect the PC to the station via the USB terminal on the station.

* Be sure to connect only one station to a PC.



NOTE: Set the "COM Port" setting to the USB terminal number that is used for connecting to GT-BCXB-N. (→ **8-1**)

NOTES:

- When downloading the setting data, entering a passcode is required.
- When "LAN" is selected, data downloading is not possible from an expanded bus control unit GT-BCXB-N.

8-6 Setting the current time of GT-MCX

The current time must be set for "Schedule Transfer Setting".

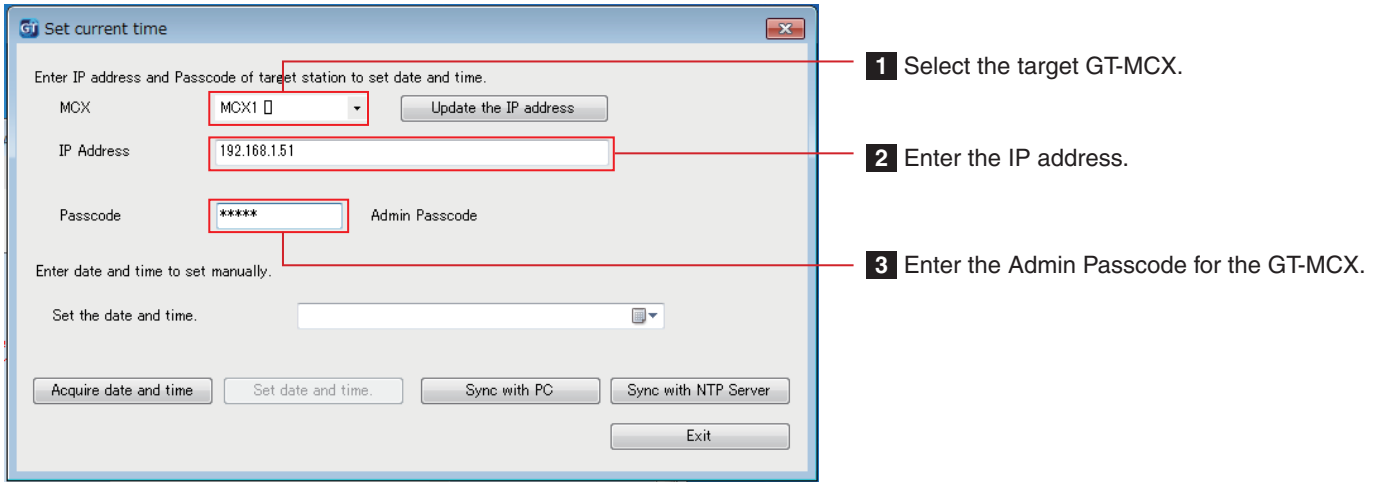
* The current time is not updated when a setting data is uploaded.

* When the NTP server is set with the setting item "Network Settings" - "NTP Server", the current time is acquired from the NTP server automatically.

1 From the "Connection" menu, select "Set current time".

"Set current time" window appears.

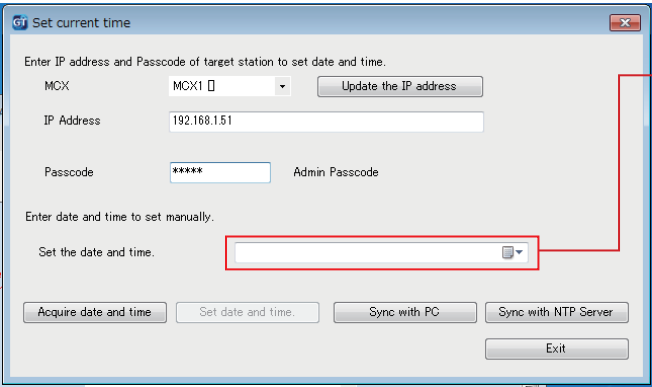

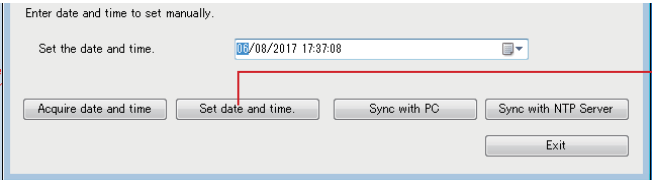
2 Select the target GT-MCX, enter the IP address, and then enter the Admin Passcode for the GT-MCX.



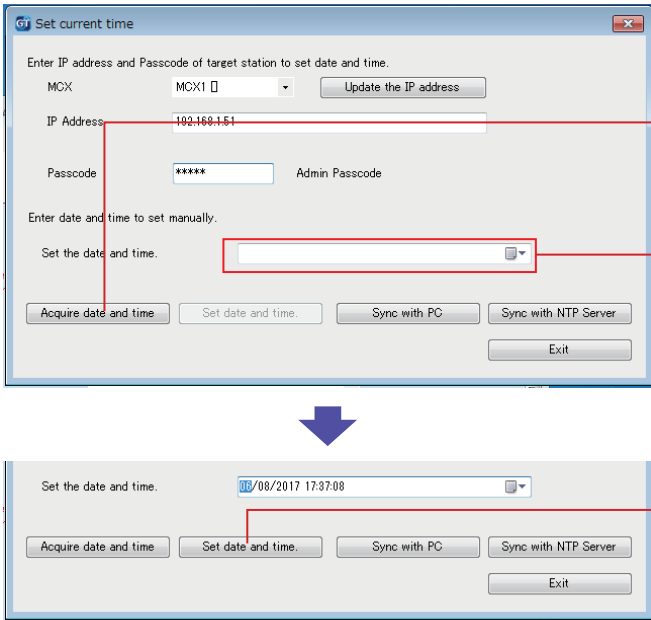
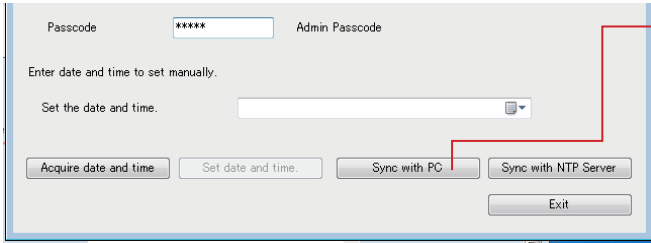
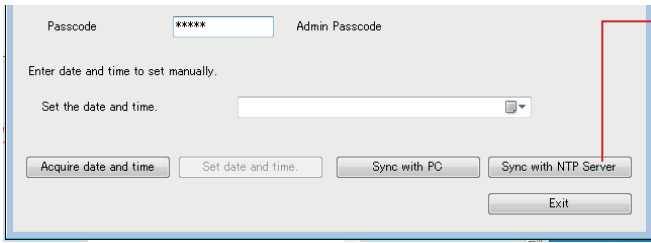
The screenshot shows the "Set current time" dialog box. It contains the following fields and buttons:

- MCX: A dropdown menu with "MCX1" selected. A red box highlights this field with callout 1.
- IP Address: A text input field containing "192.168.1.51". A red box highlights this field with callout 2.
- Passcode: A text input field containing "*****". A red box highlights this field with callout 3.
- Buttons: "Update the IP address", "Acquire date and time", "Set date and time.", "Sync with PC", "Sync with NTP Server", and "Exit".

3 Set the current time by following one of the four methods below.

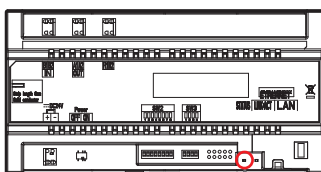
Method	Procedure
Manual setting A	 <p>1 Click .</p> <p>A calendar appears.</p> <p>2 Select the desired date from the calendar.</p> <p>The date and time are entered in the entry field.</p> <p>3 If necessary, change the date and time manually.</p>
	 <p>4 Click.</p> <p>The date and time has been set to the target GT-MCX.</p>

SYSTEM SETUP USING GT SETUP TOOL

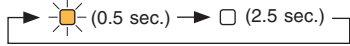
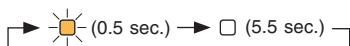
Method	Procedure
Manual setting B	<p>Acquire the date and time set in the target GT-MCX.</p>  <p>1 Click. The date and time are acquired from GT-MCX and entered in the "Set the date and time" entry field.</p> <p>2 If necessary, change the date and time manually.</p> <p>3 Click. The date and time has been set to the target GT-MCX.</p>
Sync with PC	<p>Acquire the date and time from the PC.</p>  <p>Click. The date and time are acquired from the PC and entered in the "Set the date and time" entry field.</p> <p>* The date and time cannot be changed manually.</p>
Sync with NTP Server	<p>Acquire the date and time from the NTP server in real time.</p>  <p>Click. The date and time are acquired from the NTP server and entered in the "Set the date and time" entry field.</p> <p>* The date and time cannot be changed manually.</p>

NOTES:

- When no power is supplied to GT-MCX for more than 30 minutes, the date and time are cleared. When the power is recovered, the date and time are set to "01/01/2017 00:00:00" as default.
- The status indicator (orange) of GT-MCX shows the setting status of the date and time as below.



Status indicator (orange)

Status of settings		Status indicator (orange)
Date and time are set to other than default.	-	Off
Date and time are set to default.	Schedule Transfer Setting is set.	Slow flashing 
	Schedule Transfer Setting is not set.	Long interval flashing 



Issue Date: Jun. 2017

Ⓐ 0617 AZ 59046

AIPHONE CO., LTD., NAGOYA, JAPAN